



# RULES of Transporting Chemicals between laboratories



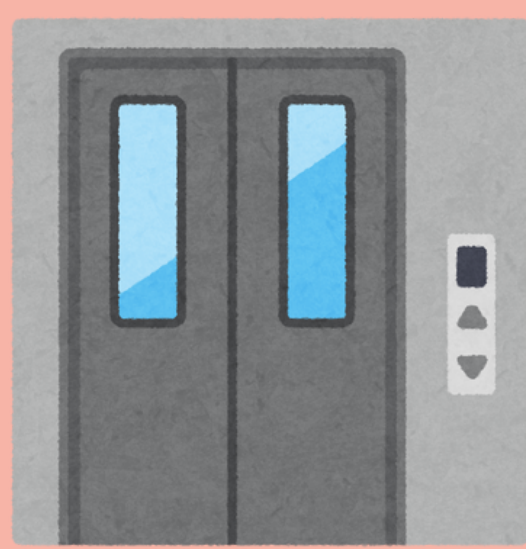
Use **robust secondary containment** (e.g., bottle carriers) for transporting chemicals and ensure caps are securely **tightened**.

1



**Utility carts** may be used to transport hazardous materials in secondary containment.

2



Use a **freight elevator** to transport chemicals between floors.

3



Keep **at least one hand free of gloves** and use the bare hand(s) to press lift buttons and open doors.

4



**Update** the chemical inventory to reflect the new storage location of chemicals.

5